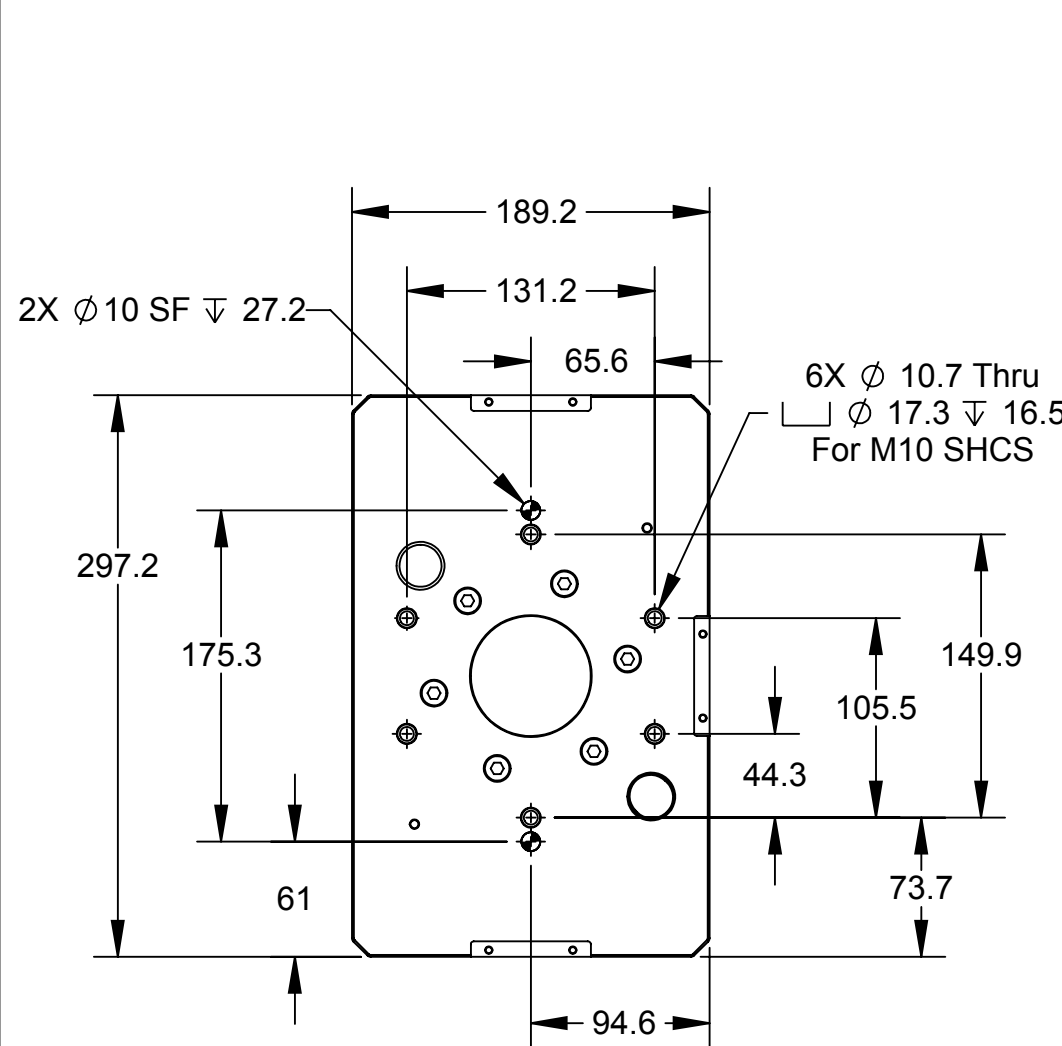
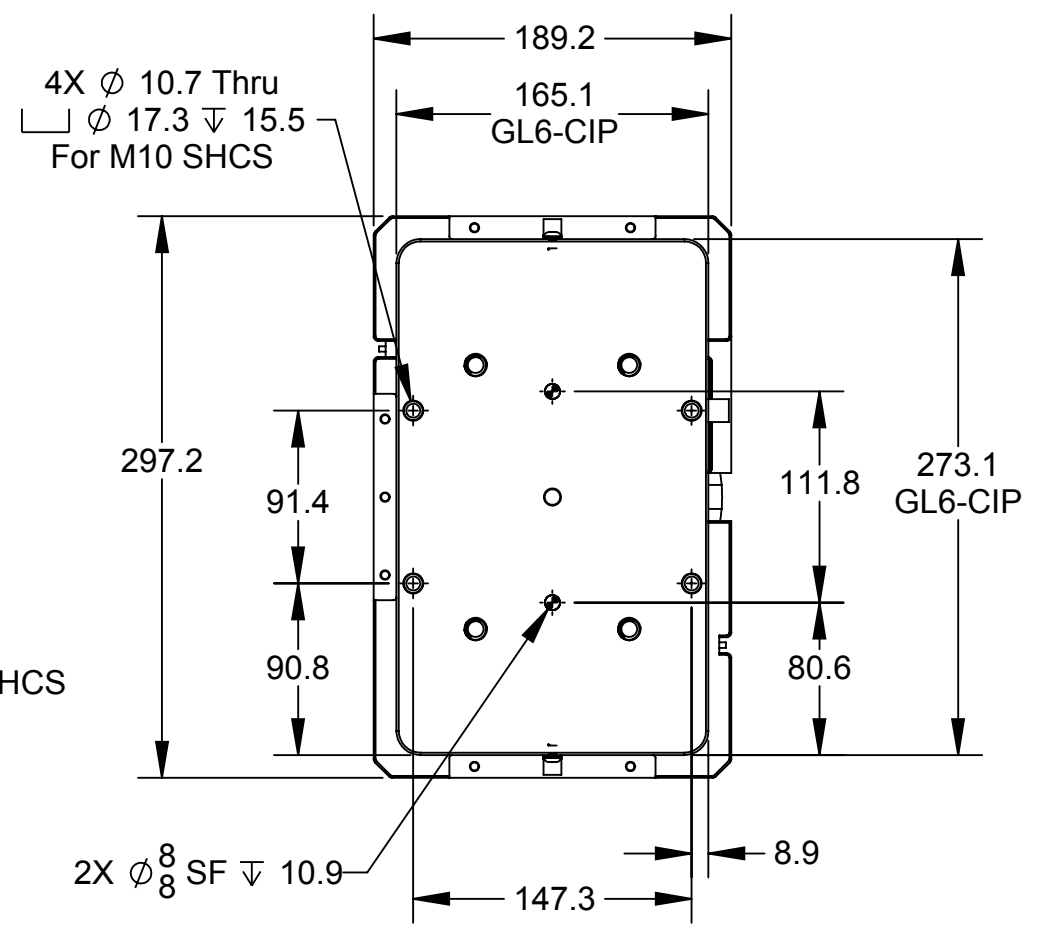
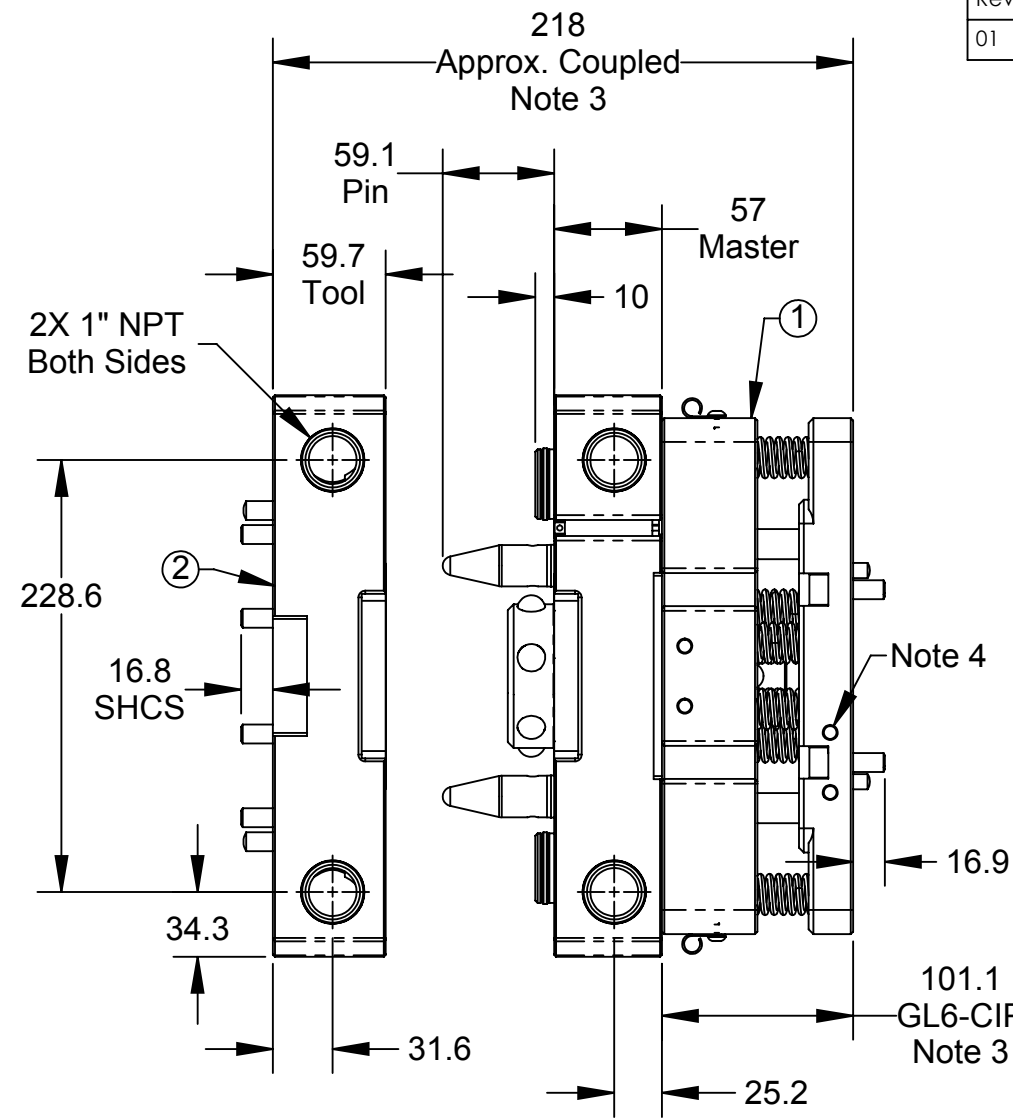


Rev.	Description	Initiator	Date
01	Initial Drawing	KRZ	05/28/13

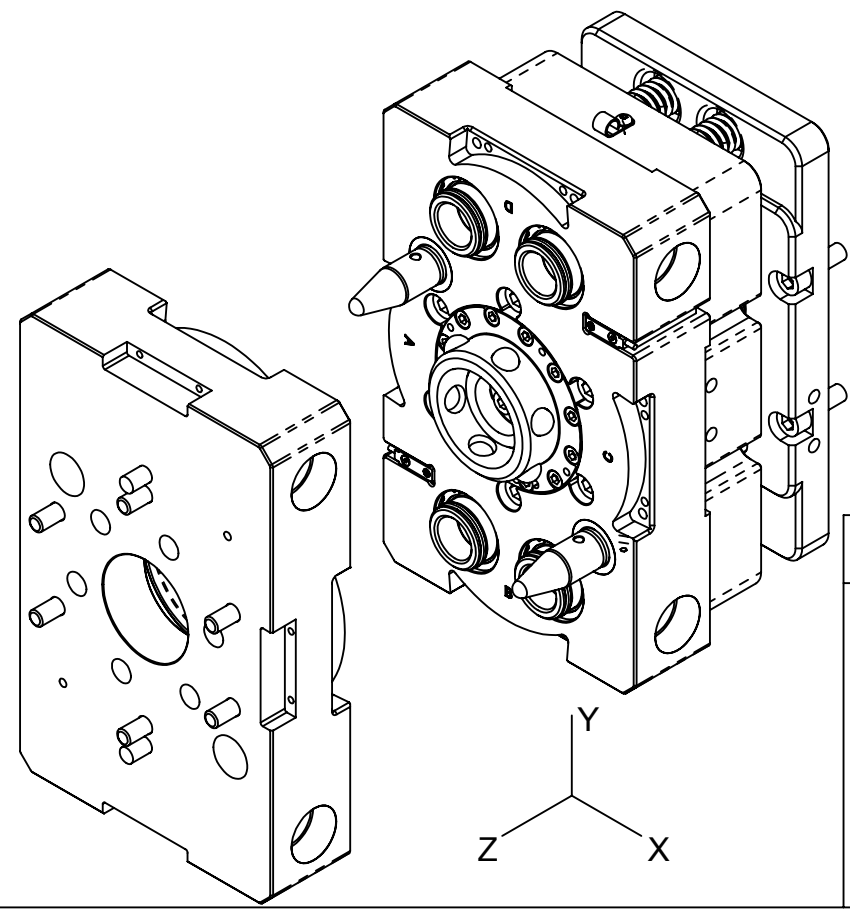


**Tool Side
(Projection Only)**



**Master Side
(Projection Only)**

- Notes:
1. Design is subject to change.
 2. Utility coupler is designed for +/- 7.5mm XY and 5 degree angular compliance.
 3. Compliance shown in retracted (uncompressed) state. When compliance assembly is compressed dimensions is 89.8mm.
 4. Mounting pattern for optional spring assist kit for heavy shear loads.
 5. UC features QC-110 locking mechanism
 6. PNP Lock/Unlock and RTL Sensors
 7. GL6-CIP compliance assembly is separate assembly and can be mounted to Master or Tool



ITEM NO.	QTY.	PART NUMBER	DESCRIPTION
1	1	9123-GL6LCM-0-0-0-0-SM-N-8080	GL6 Compliant Utility Coupler Master, Locking Mechanism Option, (4) 1" NPT Pass Through Ports, PNP Lock/Unlock and RTL Sensors
2	1	9123-GL6LT-0-0-0-0-N	GL6 Utility Coupler Tool, Locking Mechanism Option, (4) 1" NPT Pass Through Ports

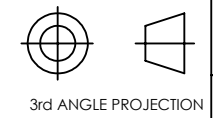
NOTES: UNLESS OTHERWISE SPECIFIED.
DO NOT SCALE DRAWING. ALL DIMENSIONS ARE IN MILLIMETERS.



1031 Goodworth Drive, Apex, NC 27539, USA
Tel: +1.919.772.0115 Email: info@ati-ia.com
Fax: +1.919.772.8259 www.ati-ia.com
ISO 9001 Registered Company

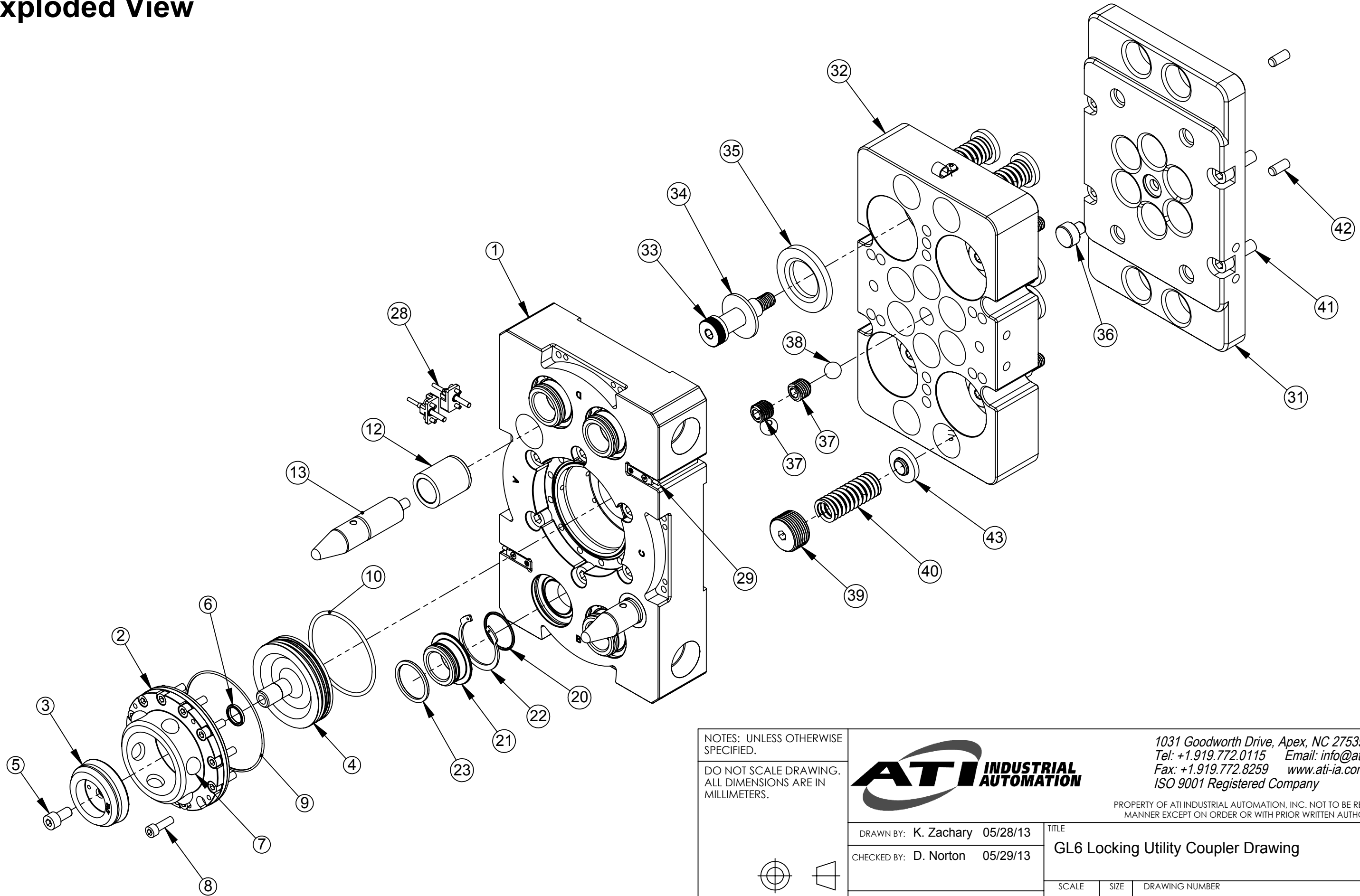
PROPERTY OF ATI INDUSTRIAL AUTOMATION, INC. NOT TO BE REPRODUCED IN ANY MANNER EXCEPT ON ORDER OR WITH PRIOR WRITTEN AUTHORIZATION OF ATI.

DRAWN BY: K. Zachary 05/28/13		TITLE	
CHECKED BY: D. Norton 05/29/13		GL6 Locking Utility Coupler Drawing	
PROJECT # 121127-1	SHEET 1 OF 3	SCALE 1:4	SIZE B
DRAWING NUMBER 9630-20-GL6		REVISION 01	



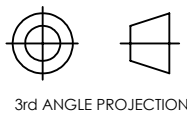
GL6 Master Assembly Exploded View

Rev.	Description	Initiator	Date
-	See Sheet1	-	-



NOTES: UNLESS OTHERWISE SPECIFIED.

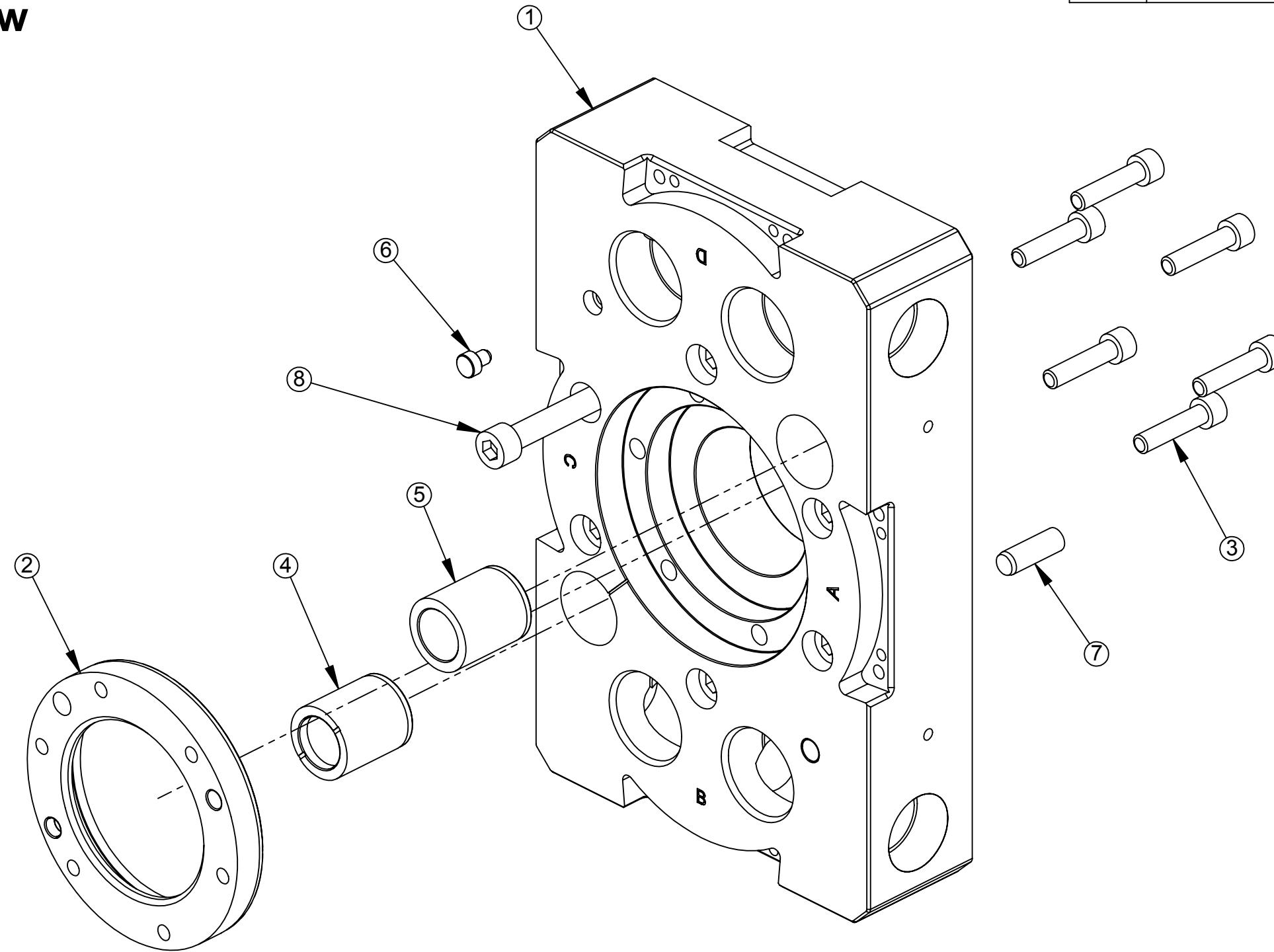
DO NOT SCALE DRAWING. ALL DIMENSIONS ARE IN MILLIMETERS.



		1031 Goodworth Drive, Apex, NC 27539, USA Tel: +1.919.772.0115 Email: info@ati-ia.com Fax: +1.919.772.8259 www.ati-ia.com ISO 9001 Registered Company	
		PROPERTY OF ATI INDUSTRIAL AUTOMATION, INC. NOT TO BE REPRODUCED IN ANY MANNER EXCEPT ON ORDER OR WITH PRIOR WRITTEN AUTHORIZATION OF ATI.	
DRAWN BY: K. Zachary 05/28/13	CHECKED BY: D. Norton 05/29/13	TITLE GL6 Locking Utility Coupler Drawing	
PROJECT # 121127-1 SHEET 2 OF 3	SCALE 1:4	SIZE B	DRAWING NUMBER 9630-20-GL6
			REVISION 01

GL6 Tool Assembly Exploded View

Rev.	Description	Initiator	Date
-	See Sheet1	-	-



NOTES: UNLESS OTHERWISE SPECIFIED.

DO NOT SCALE DRAWING.
ALL DIMENSIONS ARE IN MILLIMETERS.



3rd ANGLE PROJECTION



1031 Goodworth Drive, Apex, NC 27539, USA
Tel: +1.919.772.0115 Email: info@ati-ia.com
Fax: +1.919.772.8259 www.ati-ia.com
ISO 9001 Registered Company

PROPERTY OF ATI INDUSTRIAL AUTOMATION, INC. NOT TO BE REPRODUCED IN ANY MANNER EXCEPT ON ORDER OR WITH PRIOR WRITTEN AUTHORIZATION OF ATI.

DRAWN BY: K. Zachary 05/28/13		TITLE	
CHECKED BY: D. Norton 05/29/13		GL6 Locking Utility Coupler Drawing	
PROJECT # 121127-1	SHEET 3 OF 3	SCALE 1:4	REVISION 01
SIZE B	DRAWING NUMBER 9630-20-GL6		